

Map 5.1 Landslide Susceptibility for the Waikato Region Determined by Logistic Regression

Landslide Susceptibility

- Very low
- Low
- Moderate
- High
- Very High

Projection:
New Zealand Map Grid (NZMG)

Datum:
Geodetic Datum 1949

Model Used:
Logistic Regression of Set 1 Data

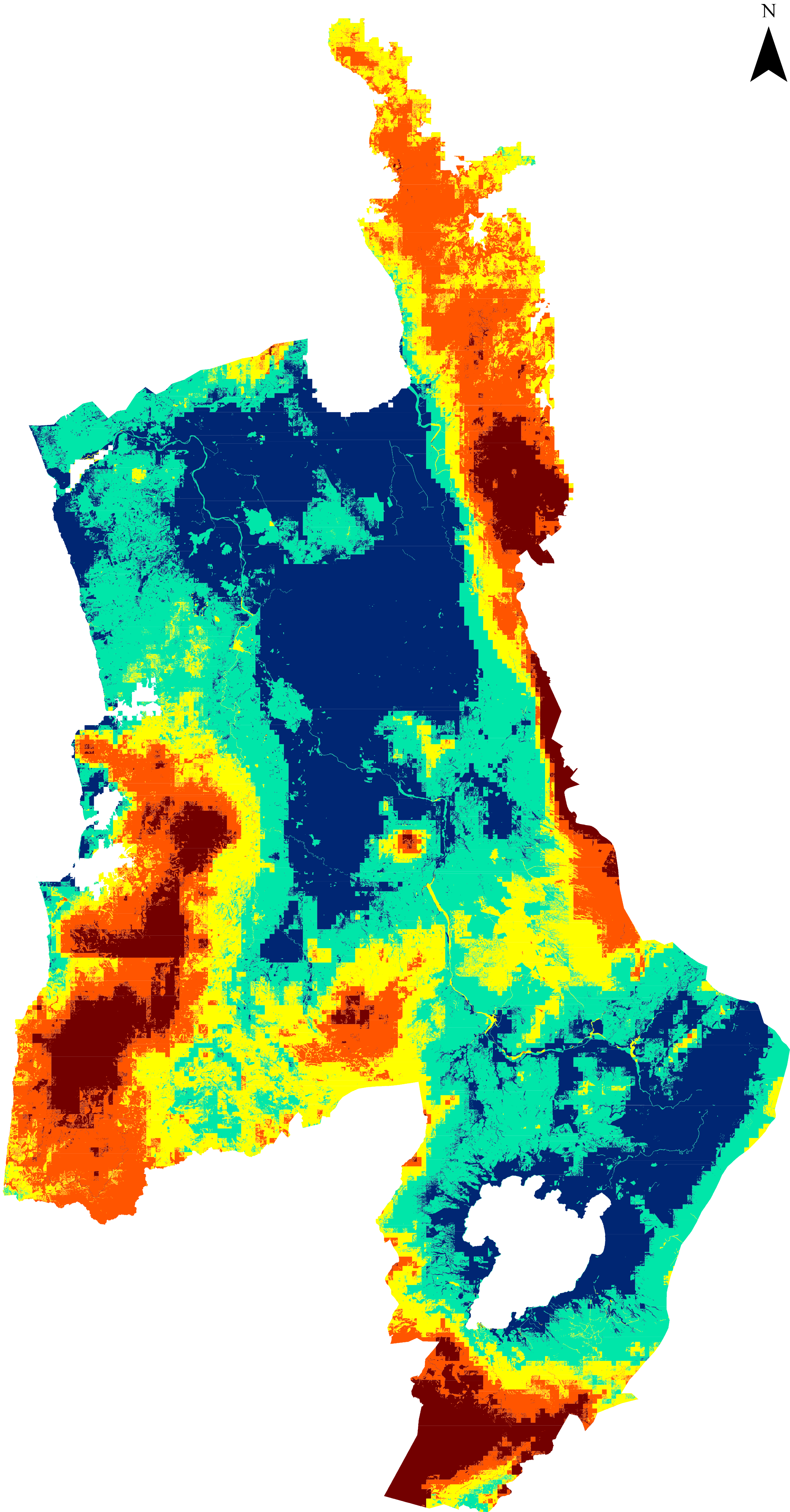
Equation:
 $P = 1 / [1 + \text{EXP}(-z)]$

Predictor Parameters:
Slope;
Mean Monthly Rainfall;
Land Cover (Land Use);
Geology.

Classification:
Natural Breaks

Created By: Renée Schicker
Date: 18 February 2010

Contact:
renee_schicker@hotmail.com



0 10 20 30 40 50 Km